



## PRODUCT CATALOGUE

2018 EDITION



# LABORATORY EQUIPMENTS

## Diploma & Degree Pharmacy



# SINGHLA SCIENTIFIC INDUSTRIES

✉ [singhla@rediffmail.com](mailto:singhla@rediffmail.com)

🌐 [www.polylabindia.com](http://www.polylabindia.com)



**Anatomy**  
**Physiology**  
**Chemistry**  
**Pharmaconosy**  
**Pharmacology**  
**Pharmaceutics**  
**Lab Glassware**  
**Lab Hardware**  
**Lab Consumables**



## Company Profile

We are pleased to introduce our 2018-19 edition of SSI Catalogue

This new edition of our catalogue cover all departments of Anatomy, Physiology, Pathology, Microbiology, Biochemistry, Forensic, Community Medicine, Nursing & Pharm Cology Departments.

Started in 1956, today **SSI** is a name that is synonymous with quality & workmanship and it is has been our constant & Endeavour to improve further. Commitment, Efficient Services, Competitive Prices have always been our prime objective.

The firm belief in perfection has resulted in constant up gradation of technology and today all SSI product are totally being manufactured on CNC Machine with latest technology.

Hope the new edition our catalogue will be useful in right product that meets your needs.

Wish you a successful upcoming year.

Thanking You.

**Devinder Singhal**

**Singhla Scientific Industries**

Email : [singhla@rediffmail.com](mailto:singhla@rediffmail.com)

**+91-98967-20958**



### PH-01 Student Microscope

Triple nose with coarse adjustment by rack & pinion. Fine adjustment by lever system with drum. Fixed condenser Iris diaphragm with optics comprising of two eye pieces (10x, 15x) & objectives (10x & 45x). Packed in thermacol box.

**SSI-06B** Same as above packed in nicely polished wooden box with lock & key.



### PH-02 Medical Microscope

Vertical monocular body, inclinable to horizontal level of 90° for projection. Mechanical tube length 160mm. Coarse adjustment by rack & pinion. Fine adjustment by graduated lever system with drums. Triple revolving nose piece. Iris Diaphragm with bright field condenser. A 11.2 movable on rack & pinion. Sub stage reflector of 50mm dia replacement with microscope lamp. Superb in finish and workmanship, complete with mechanical stage & beautiful storing cabinet.

#### Optical Combination

Hygienic Eye pieces      5X, 10X & 15X (any two)  
Achromatic Objectives    10X, 45X & 100X



### PH-03 Projection Microscope

Our projection microscope has heavy duty body, coarse & fine focusing system & triple revolving nosepiece. A plain stage 120x120mm with two spring clips to hold the slide can be provided with attachable graduated mechanical stage (optional accessories)

For the clear observation of slides, a 150mm diameter screen attached to the microscope tube.

### PH-04 Continuous Hot Extraction Soxhlet

Equipment extraction capacity 100ml flask cap 250ml with standard joint made from Borosil glass  
b) Extraction capacity 200 ml Flask cap 500ml



### PH-05 Conical Percolator

Stainless steel cap. 1000ml with lid drain cock, stainless steel sieve 3 legged stand.

- Conical Percolator heavy duty with jointless SS body SS tripod stand.



### PH-06 Tincture Press

Extra heavy for making tinctures. Decotion, infusions etc. capacity 1 ltr, stainless steel inner perforated vessel.



### PH-07 Hand Grinding Mill

Table fixing with hardened grinding discs, provisions for coarse and fine grinding.



### PH-08 Moto Driven Distintegrator

Cast steel chamber size 40mm x 25mm with 1/4 H.P. motor. All contact parts are S.S.



### PH-09 Ball Mill (Laboratory Type)

Capacity	Motor Cap.
1 kg Jar	1/4 H.P
2 kg Jar	1/4 H.P
5 kg Jar	1/4 H.P







### PH-10 Tablet Machine Hand Operated

Single Punch with SS Dye & Punch

### PH-11 Tablet Machine Motorised

Stroke machine is an eccentric driven press for tablets upto maximum 1/2" diameters. The speed of the machine is tablets upto maximum minute with single punch fitted. It can take up multi-punches as per the diameter of the tablet. Tablets which can be pressed may have round, square, triangular or any other design depending on the die & punch.



### PH-12 Capsule Filling Machine

A versatile lever operated semi-automatic machine for various operations with levers in order of (i) plates for putting of capsules (ii) removal of caps (iii) filling of powder by dispensing brush pressing (iv) ejection of 100 capsules of size 0.2 or 0.5 (any on size on order) contact parts of stainless steel.



### PH-13 Student Organ Bath

- A Single Unit
- B Double Unit
- C Single Unit with digital temp. & stirrer
- D Double Unit with Digital temp & Stirrer



### PH-14 Analgesiometer

Tall flick Radiant heat type or tail flick type for determining analgesic effect of drugs.



### PH-15 Analgesiometer Eddy Hot Plate Type Digital

For determining analgesic effect of drugs.

### PH-16 Dissolution Rate Test Equipment

Dissolution Rate Test consist of water bath of 30.5 cm long, 20.5 cm wide and 23 cm high fitted with a thermostatic control maintains the temperature of water at 47 degree centigrade with  $\pm 0.5^{\circ}\text{C}$  variations. Covered vessel 1000ml made of coating glass, variable speed motor, cylindrical basket and shaft with blades of stainless steel.



### PH-17 Dissolution Rate Test Equipment (6 Basket)

Dissolution Rate Test Appt. 6 Basket with motorized lift with digital display of temperature, RPM and timer. Complies with USP, IP specifications



### PH-18 Microprocessor Dissolution Test Apparatus

#### Features

- 8 Station
- 6 Station
- Complies with USP, IP specifications
- Extremely Useful for Pharmaceutical Labs
- Highly Accurate and Easy to Operate
- Programmable Stirrer Speed Control i.e. (25–200 RPM)
- 20 x 4 Line Alphanumeric LCD with Backlit
- 19 Soft Touch Membrane Type Keys
- Three Programming Modes i.e. Routine, Sustain and Control
- 20 Independent Programmable Setups for Routine and Sustain Mode with Storage Facility
- 200 Samples Storage Facility
- Printer Attachment Facility
- Audio Visual Indicators for System Status
- Easy to Empty & Clean the Water bath with Bottom Drainage
- Continuation of Last Sample Run in case of Power Failure



### PH-19 Disintegration Test Apparatus

Used for determination of disintegration of time of tablets. A motorized shaft moves in an up & down direction at a frequency of 30 cycles per minute holds 6 glass tubes of standard size with stainless steel wire gauge bottom. Cylinder moves up & down with standard dish inside in a 1 ltr. beaker filled of distilled water which is maintained at  $37^{\circ}\text{C}$ , by thermostatically controlled hot plates. (without beaker)



### PH-20 Disintegration Test Apparatus

Double Basket

### PH-21 Disintegration Test Apparatus

Double Basket Water Bath Type Digital Temperature





### PH-22 Tablet Friability Test Apparatus

Used for tablet to determine the durability from the time of production to the time of use. A transparent plastic drum rotating has plastic blade which carries the tablets to a predetermined height and lets them off. The rotation period is determined by a timer. Tablets are weighed before and after the test and difference in weight for a particular time period indicates the rate of abrasion.



### PH-23 Tablet Friability Test Apparatus Double Drum



### PH-24 Cook's Pole Climbing

Response apparatus for the study of pole jump (Avoidance) response.



### PH-25 All Purpose Equipment

This is a compact bench top model with platform fitted with SS Lotus clamp with Digital Timer & RPM Microprocessor Based with accessories. Coating Pan, Polishing Pan, Ball Mill, Vcone Blender, Cube Mixer etc.



### PH-26 Ampule Filling & Sealing Device

Simple syringe type hand driven gives ten ampules per minute capacity of filling adjustable from 1ml to 10ml by a cam lever arrangement automatic intake outflow of fluid all contact parts are borosil glass the sealing apparatus consists of glass fusing burner for LPG or petroleum gas with foot bellow and rubber tubing.



### PH-27 Tablet Coating Pan

The machine is worked by oil immersed gearbox with 1/4 H.P. Motor driven, or by Heavy duty DC Geared Motor. Air blower is operated independently and air is thermostatically controlled to give temperature 30°C to 110°C. Switches for motor & blower are fixed on a panel with neon indicators. Also mains lead with 15 amp plug provided.

### PH-27 Tablet Polishing Pan

Detachable Polishing Pan for use with coating pan is made of mild steel, painted and provided with inner lining of superior canvas cloth.



### PH-28 Tablet Hardness Tester Monsanto

A fairly handy instrument for taking quick readings for the hardness of tablets it is made of brass turned parts. Heavily chrome plated the scale is 0 to 20 Kg. The index mark and division is in reading. Scale is adjustable for zero setting as per size of the tablets.



### PH-29 Tablet Hardness Tester Pfizer

We are in to supplying of Tablet Hardness Tester Pfizer Type which helps to test tablet hardness quickly, accurately & conveniently, the instrument is deal for tablet hardness testing, very handy and potable, records quickly and directly on dial indicator the hardness reading upto 20 kgs with accuracy 0.5 kg, maximum tablet diameter 25mm. The entire product series is designed by our vendors using premium quality basic material and the latest technology in adherence to set industry standards and guidelines.



### PH-30 Bottle Filling Machine

Hand Operated Capacity 5ml to 50ml  
Motorized Single Syringe

### PH-31 Bottle Cap Sealing Machine



### PH-32 Aspetic Cabinet

Wooden structure with slopping front acrylic sheet with 1/2' germicidal ultra violet tube & 2' florescent tube for white light with necessary choke blast, starter and switches fitted. Two holes with rings and sleeves for insertion of arms provided.







### PH-33 Electro Convulso Meter

Simple  
Digital



### PH-34 Actophoto Meter

DIGITAL ACTOPHOTOMETER (ACTIVITY CAGE) is designed to study the spontaneous or induced or locomotors activity in small animals like mice or rates. In this apparatus, we have used the optical sensors and emitters to record the horizontal movements of the animals on a six digital counter display.



### PH-35 Ampule Filling & Sealing Device

Simple syringe type hand driven gives ten ampules per minute capacity of filling adjustable from 1ml to 10ml by a cam lever arrangement automatic intake outflow of fluid all contact parts are borosil glass the sealing apparatus consists of glass fusing burner for LPG or petroleum gas with foot bellow and rubber tubing.



### PH-36 Ampule Washing Machine

Ampule Washing Consists of 6 S.S. Needle jets fixed on a stainless steel pipe 12.5mm dia with side tap and serrations for fixing rubber tube with tab water spring loaded ampule holding arrangement for various sizes of ampules with stainless steel bottom tray on stand.



### PH-37 Collapsible Tube Filling Machine

Stroke type barrel and piston arrangement with stroke setting for various capacity of filling tubes detachable nozzles provided for each separate capacity all contact parts are of stainless steel including hopper built on cast iron body hand lever operated.



### PH-38 Collapsible Tube Crimping & Sealing Machine

Hand lever sliding movements with toothed jaws spring action release of jaws robust construction.



### PH-39 Rota-rod

For determining neuro-pixicity, muscle, tone, balance and motor coordination in rats and mice. Available in two compartment, three compartment and six compartment models. Each compartment is fitted with a digital time interval recorder.

A Two Compartment, B Three Compartment, C Four Compartment



### PH-40 Bulk Density Apparatus with timer



### PH-41 Bulk Density Apparatus with Digital timer



### PH-42 Antibiotic Zone Reader

The Antibiotic zone reader provides a rapid accurate method for determining the strength of antibiotic materials by measuring the diameter of an inhibited zone in petri dish. The zone reader measures the diameter of the inhibited zone to 0.02 mm within the range of 0-35mm. Works on 230V AC 50 Hz.



### PH-43 Infra Red Moisture Balance

A basic method for determination of moisture content, measure moisture percentage by weight and drying simultaneously. Infrared radiation are reflected by a bulb and its temperature is controlled by a regulator.

#### Specification:

Range	:	0-100%
Accuracy	:	±0.2%
Dimension	:	38x35x38 cm
Weight	:	20 Kg. Approx
Sample Weight	:	5gm, 20g, 25gm or as required
A.C. Mains	:	220V 50Hz



### PH-44 Double Cone Blender Motorised with 1/4 H.P. motor

### PH-45 Suppository Moulds (Capacity 4 Moulds)

Made from brass/gu-metal, machine made perfect shapes, smooth and polished cavities, nickel plated and various capacities with a number of moulds in each set.

Capacity-4moulds 1gm, 2gm

Capacity-6moulds 1gm, 2gm

### PH-46 Tissue Culture Racks

- Tissue Culture Racks are made of mild steel angle frame, shelves & frame are powder coated painting in corrosion resistant paint or S.S.
- UV Germicidal Light are fitted inside the rack / work area.
- Fitted with 0-24 Hours Mechanical Timers (optional, fitted in two models only)
- The whole rack is provided with four nos. castor wheels at the bottom for easy mobility to any place.





### PH-47 Tablet Counter (Tablet Counting Device)

Shovel type, made of Aluminium (Capacity 100 tablets) 9.5mm perforations, provided with a pouring lip and handle. A quick and convenient device for easy counting.

### PH-48 Ointment Slab

Made from imported acrylic sheet with marking size 20x20cms.

### PH-49 Ointment Spatula

Size 6" S.S. wide blade with superior quality wooden handle.



### PH-50 Sieves Set (Pharmacopeia Standard)

The Sieves are designed in all respect as per B.S. Specification. The frame is made out of Brass without any joint, free from corners where the material could be lodged. Test sieve 8" Dia. Brass frame with stainless steel wire mesh, B.S.S. Mesh No. 10, 16, 22, 30, 44, 60, 80 & 100.

### PH-51 Granulating Sieves

Wooden frame S.S. mesh.



### PH-52 Animal Cage

Available in two different sizes, these cages provide excellent shelter for different animal species in the laboratory. The metallic top provides proper ventilation and has provisions for feeding the species. Material: Polypropylene / Stainless Steel.

Size 290x220x140mm  
430x270x150mm



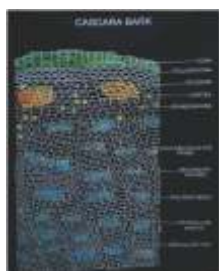
### PH-53 Water Bottle

Water Bottle with SS nozzle capacity 125 & 250 ml



### PH-54 Atomic Model Set

Atomic Set Junior & Senior



### PH-55 Chart Pharma Cognosy

Chart Size 30"x40" screen printed on black rexine mounted with rollers.



### PH-56 Chart Human Anatomy & Physiology

Chart Size 30"x40" on polyart sheet/paper sheet laminated multicolour offset printed.

**PH-57 Haemocytometer**

Haemocytometer with rohem silver line/marienfeld german chamber, RBC & WBC pipettes.

**PH-58 Hemoglobinometer**

Hemoglobinometer with round tube Indian  
Hemoglobinometer with round tube German

**PH-59 Stage Micrometer**

1/100mm ERMA Japan

**PH-60 Blood Pressure****PH-61 Chemical Balance**

Chemical Balance capacity 200gm sensitivity 1/5 mgm double door teakwood case with brass parts.

**PH-62 Prescription Balance**

Cap 100 gm with brass C.P. parts sunmica top base & one pan of glass other stainless steel/both pans of S.S.

**PH-63 Torsion Balance**

With removable Glass Pan Triple Beam Balance 111gm. with glass Pan  
Tripe Beam Balance 11 gm with glass pan of sunmica base.

**PH-64 Weight Box Analytical**

Weight Box Analytical capacity 1mgm to 100gms brass chrome plated

**PH-65 Dissection Box**

Dissection Box with 30/19 instruments all of stainless steel.



### PH-66 Ampoule Clarity Test Equipment

For ampoules milk white and black screen fitted on base board with diffused light arrangement, over all dimensions are 24" x 12" x 18" high. A stainless steel upright with adjustable slide arm with clamp for holding a magnifier is provided. Complete with magnifier. Mains cord plug for light provided.



### PH-67 Distillation Plant All Glass

Distillation plant all glass flask capacity 5 ltrs with heater embedded with condenser and receiver adaptor complete with stand & clamp to hold the flask.



### PH-68 Water Still (Manesty Type)

Wall hanging stainless steel

#### Output Capacity (Approx.)

- A Output approx 2 to 3 litres per hour.
- B Output approx 3 to 4 litres per hour.
- C Output approx 5 to 6 litres per hour.



### PH-69 Spirometer

We are offering Student Spiro Meter to our clients. The product has a chain attached which compensates for counter balance to flat through pulley calibrated to denote volume inlet and outlet tubes. The chamber is made with stainless steel corrugated rubber tube and mouth piece. Vital Capacity 6 Litre



### PH-70 Histamine Chamber

Complete with sphygmomanometer & Nebulizer



### PH-71 Digital Telethermometer

with 6 probes.



### PH-72 Magnetic Stirrer

Magnetic Stirrer electrically operated with hot plate and energy regulator capacity 1 ltr.



## KY-73 Kymograph

A kymograph is a device that gives a graphical representation of spatial position over time in which a spatial axis represents time. It basically consists of revolving drum wrapped with sheet of paper on which a stylus moves back and forth recording perceived changes of phenomena such as motion or pressure.



Kymograph E-8



Digital Kymograph

## Accessories For Kymograph



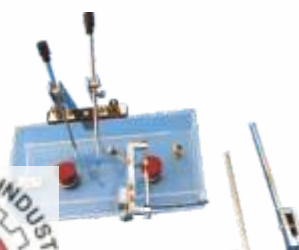
KY-74 Student Stimulator



KY-75 Feemur Clamp



KY-76 Electric Timer



KY-77 Muscle Chamber



KY-78 Simple Lever with after Load Screw



KY-79 Mary's Tambour



KY-80 Myograph Board



KY-81 Myograph Lever



KY-82 Starling Heart Lever



KY-83 Standard X-Block



KY-84 Adjustable Stand



KY-85 Frontal Lever



KY-86 Smoking Stand & Smoking Burner





### CH-87 ABBE Refractometer

Refractometer is a very precise optical instrument. Designed for quick and accurate measuring system by using a few drops of liquid. Quite suitable for testing and control of purity/quality suitable for testing and control of purity/quality of oils, sugar, paraffins, waxes, animal and plants fats, glycerine, sugar % scale 0-95% brix.



### CH-88 Student Polarimeter

STUDENT POLARIMETER (Half Shade)

Analysers brass scale graduated from 0-360 deg. or 0-180 deg. with vernier reading 6" and accommodates a 200 mm glass tube. It is packed in a card board box.

STUDENT POLARIMETER (Bi-Quartz)



### CH-89 Research Polarimeter

Used in medical, pharmaceutical and chemical research laboratories. Consist of a imported half shade nicol polariser, analyser, 100mm. Diameter circular scale divided in degrees 0-360 Deg. x 1 Deg. And a sugar scale divided -30 Deg. To + 130 Deg. X 1 Deg. ISS, a divided micrometer drum is given to read 0.05 Deg. (3 minutes) and 0.1 Deg. ISS, the scale is properly illuminated for taking readings. The body is very sturdy and separate sodium lamp is stand is provided. Complete with polarimeter tube, bubble traps at the center, 200mm sodium lamp with stand and transformer



### CH-90 Medico/Clinical Centrifuge/Doctor Model

- Capacity
- A 4 x 15 ml tubes
  - B 6 x 15 ml tubes
  - C 8 x 15 ml tubes



### CH-91 Serological Water Bath (Thermostatic Water Bath)

Temperature upto 80°C accuracy of  $\pm 1^\circ\text{C}$  to work on 220-240 Volt AC 50 Hz.

Size Inside Chamber	(Stainless Steel)	Cap. (Approx.)
300 x 175 x 175 mm	(Suitable for 1 racks)	12 ltrs.
300 x 250 x 175 mm	(Suitable for 2 racks)	14 ltrs.
375 x 300 x 175 mm	(Suitable for 4 racks)	18 ltrs.
455 x 300 x 175 mm	(Suitable for 6 racks)	25 ltrs.

#### Optional:

- i Microprocessor PID digital temp. Indicator-cum-Controller with timer.
- ii Stirrer with 1/20 H.P. high speed motor with stainless stirring rod & blade.



### CH-92 Water Bath Rectangular (Double Wall)

	(Thermostatic Control)	Temp. upto 99.8°C
	Size Inside (Stainless Steel)	Cap. (Approx.)
A	300 x 250 x 100 mm 6 holes of 75 mm dia.	8 ltrs.
B	355 x 405 x 100 mm 12 holes of 75 mm dia.	15 ltrs.

#### Optional:

- I Digital temp. Indicator-cum-Controller.

**CH-93 Hot Air Oven**

Temp. range from room to 90°C. Double door, with glass window. Inner chamber of anodized aluminum/stainless steel sheet.

	Chamber Size mm	(H x W x D) Inches	No. of Shelves	Cap. Approx. Liters
A	300 x 300 x 300	12"x12"x12"	2	28
B	350 x 350 x 350	14"x14"x14"	2	45
C	400 x 400 x 400	16"x16"x16"	2	65
D	450 x 450 x 450	18"x18"x18"	2	95
E	600 x 450 x 450	24"x18"x18"	2	125
F	600 x 600 x 600	24"x24"x24"	2	224
G	900 x 600 x 450	36"x24"x18"	2	252
H	900 x 600 x 600	36"x24"x24"	2	336
I	900 x 900 x 900	36"x36"x36"	3	720

**CH-94 Incubator**

Temp. range from room to 90°C. Double door, with glass window. Inner chamber of anodized aluminum/stainless steel sheet.

	Chamber Size mm	(H x W x D) Inches	No. of Shelves	Cap. Approx. Liters
A	300 x 300 x 300	12"x12"x12"	2	28
B	350 x 350 x 350	14"x14"x14"	2	45
C	400 x 400 x 400	16"x16"x16"	2	65
D	450 x 450 x 450	18"x18"x18"	2	95
E	600 x 450 x 450	24"x18"x18"	2	125
F	600 x 600 x 600	24"x24"x24"	2	224
G	900 x 600 x 450	36"x24"x18"	2	252
H	900 x 600 x 600	36"x24"x24"	2	336
I	900 x 900 x 900	36"x36"x36"	3	720

**CH-95 BOD Incubator**

Temperature upto 5°C to 50°C with accuracy of  $\pm 1^\circ\text{C}$ . Double walled, inside anodized aluminum/stainless steel and outside M.S. powder coated to work on 220/230 volts A.C. 50Hz. Internal illumination with fluorescent tube. Microprocessor PID digital temp. Indicator-cum-Controller.

	Chamber Size mm	Capacity in cu.ft.	Capacity ltrs.
A	455 x 410 x 610	4 cu.ft.	112
B	505 x 415 x 830	6.1 cu.ft.	171
C	565 x 565 x 865	10 cu.ft.	280
D	650 x 580 x 900	12 cu.ft.	336

**CH-96 Laminar Air Flow (Horizontal)**

Made of wood with mica top complete with HEPA Filter and Pre Filter, motor blowers static manometer, cock for gas and air or vacuum line front doors are made of plexiglass transparent thick sheet built in U.V. tube. Work table is illuminated by florescent light. Two legs table top and two table supports are detachable and can be taken out and fixed within minutes. Front door can be kept full open/half open, fully closed as desired. The equipment is fitted with safety attachments of international standards.

Size 2x2x2, 3x2x2, 4x2x2 feet





### CH-97 Water Bath Paraffin

Thermostatically controlled. Doubled walled with cups and shelves for glass tubes. Temp. upto 95°C with an accuracy of  $\pm 0.5^\circ\text{C}$  to  $\pm 1^\circ\text{C}$ . Stainless steel. Inner SS, Outer MS Power Coated.

- A 4 cups & 6 sleeves.  
B 6 cups & 8 sleeves.



### CH-98 Water Bath Tissue Floatation

	Dia	x	Depth
A	200 mm	x	75 mm
B	250 mm	x	125 mm



### CH-99 Water Bath Incubator Shaker (Metabolic Shaking Incubator)

Temperature range from ambient to 90°C. This is a double walled unit inside made of thick S.S. sheet and outside M.S. powder coated, supplied complete with shaking tray, water bath cover to work on 220 volt 50Hz A.C. supply.

	Shaking tray Size (Stainless Steel)	Capacity (Approx.) ltrs.
A	275 x 150 mm	12
B	405 x 150 mm	18

Optional:  
i Digital temp. Indicator.

ii Shaking tray for 25ml, 50ml, 100ml, 250ml, 500 ml & 25mm dia. test tubes or conical flasks.

### CH-100 Laboratory Stirrer

Optional :

- i Automatic 0-60 minutes Timer.



### CH-101 Tissue Homogeniser

1/20 H.P. motor speed controlled. Complete with tissue homogenizing cup and rod is made of stainless steel.

- A Homogenizing Vessel 25 ml  
B Homogenizing Vessel 50 ml  
C Homogenizing Vessel 100 ml

### CH-102 Vortex Shaker/Cyclo Mixer

Touch of finger.

### CH-103 Heating Mantle

Model of glass yarn, with energy regulator & ON, OFF switch to work 220 volt AC.

	Capacity	Wattage
A	50 ml.	60
B	100 ml.	60
C	250 ml.	150
D	500 ml.	200
E	1 liter.	300
F	2 liters.	450
G	3 liters.	450
H	5 liters.	600
I	10 liters.	2 x 500
J	20 liters.	4 x 500



### CH-104 Hot Plate

- A ROUND, SINGLE, 20 cm (8") dia. molded top.
- B ROUND, DOUBLE, Two plates of 20 cm (8") dia.
- C COIL TYPE, 20 cm (8") dia.

**Note:**

- (I) Sunvic energy regulator extra cost.

### CH-105 Hot Plate (Rectangular)

Following standard sizes are available

- A 30 x 25 cm (12" x 10")
- B 40 x 25 cm (16" x 10")
- C 45 x 30 cm (18" x 12")
- D 60 x 45 cm (24" x 18")

**Note:**

- (I) Sunvic energy regulator extra cost.



### CH-106 Slide Warming Table

Thermostatically controlled uniform. temp. from room to 80° C top made of anodized aluminum/ steel.

Top plate size (Length x Width)

- A 30 x 25 cm (12" x 10")
- B 40 x 25 cm (16" x 10")
- C 45 x 30 cm (18" x 12")
- D 60 x 15 cm (24" x 6")



### CH-107 Rotary Shaker (Platform Type)

	Platform Size	Holding Cap.	Motor HP
A	45 x 45 cm	25 flasks of 100ml	0.25
B	45 x 45 cm	15 flasks of 250ml	0.25
C	55 x 55 cm	25 flasks of 250ml	0.25
D	65 x 65 cm	36 flasks of 250ml	0.25
E	90 x 90 cm	49 flasks of 250ml	1.00
F	100 x 100 cm	81 flasks of 250ml	1.00
G	100 x 100 cm	81 flasks of 500ml	1.00

**Optional:**

- (I) 0-60 minutes timer.

**Note:** Specific sizes & capacity can be offered on demand.



### CH-108 Melting Point Apparatus





### CH-109 Vacuum Pump Diaphragm Type

A portable diaphragm type vacuum pump cum air compressor, oil free, light weight.

<i>Max Flow Ltr./Min.</i>	<i>Max. Vacuum (in Hg.)</i>	<i>Max. Press (PSIG)</i>	<i>Motor H.P.</i>
15	22"	25	1/20
15	27"	35	1/16
45	22"	40	1/8
75	27"	60	1/4

Vacuum Gauge with Regulator for Above Pumps



### CH-110 Vacuum Pump

Vacuum Pump portable light weight with oil, 1/4 hp motor single stage capacity 45ltr.



### CH-111 Redwood Viscometer No.1 & No.2

Electrically heated with energy regulator for temperature control.



### CH-112 Pensky Martens Flash Point Apparatus 1025

### CH-113 Abels Flash Point Apparatus

This apparatus is suitable for determining the close cup flash point of petroleum and mixture according to IP 33 and IP 170 and also IS 1448 (Part 1) 1985 (P:20). It is supplied with oil cup cover, fitted stirrer, thermometer socket, S.S. water bath and stand. An electric heater is fitted at the bottom for operation on 220 volts AC circuits. With oil test jet, electrically heated with energy regulator control. It is suitable for oils whose flashes below 70°C.



### CH-114 Weighing Balance

- Auto Calibration with External Weight
- Low Battery Indicator
- Multifunction Weighing Units
- Auto Zero tracking.
- Overload Protection Design
- S.S. Weighing Pan, Level indicator, Adjustable Fit
- High Resolution, Quick Weighing, Accurate Result
- RS232 Interface
- In built rechargeable battery for continues use.



### CH-115 Rotary Evaporator Meter

- Micro Processor based controls
- Programmable temperature controls
- Accurate RPM control
- Brilliant fixed numeric display for temperature
- Ergonomically designed to save bench space
- Confirms to standards



### CH-116 All Glass Distillation Apparatus Horizontal with Quartz heater

Comprises of horizontal Borosilicate glass boiler fitted with a 3KW chromium plated immersion heater with cut off, high efficiency coil condenser ensure a reliable output of single distillate. The still is fitted on a sheet metal epoxy coated stand, suitable for bench or wall mounting. For use on 220/240 V. 50/60 Hz single phase supply. As per picture. Distillate output : ½/4 Liters/hr Approx, ph : 5 to 6.5 Pyrogen free.



### CH-117 Aquoion Two Bed Deionizers

- PVC I FRP columns, charged separately with high exchange capacity cation & anion resin.
- Analog I Digital conductivity meter with alarm -to monitor the quality of treated water.
- PVC flexible tube with necessary PP connectors for inlet & outlet.
- All are housed in a trolley mounted, corrosion proof powder coated mild steel skid for mobility.
- A chemical proof FRP tank for regeneration.





### CH-118 Ceramic Hotplate Magnetic Stirrer

#### Salient Features

- Digital LCD display with back light
- Big Size Ceramic hot plate with flame protection and durability
- Heating and stirring can proceed simultaneously.
- Temperature & Stirring speed is stepless adjusted.
- Real temperature & speed display on the screen simultaneously
- Two sensors, outside PT 100 sensor controls the liquid temperature, inside K type sensor control the hot plate temperature (selectable)
- Over temperature alarm
- Connect the temperature probe and place into glass container being stirred to measure and maintain the object temperature. Accuracy is  $\pm 1^\circ\text{C}$ .
- STANDARD ACCESSORIES
- Stir Bar, Temperature Probe, Stand, Instruction Manual



### CH-119 Digital Ultrasonic Cleaner Stainless Steel

#### Salient Features

- Inner Tank & Outer body made of Stainless Steel
- Digital RED LED display
- Temperature with timer function
- Ceramic heaters provides improved heating effect
- Drainage and cool fan available in 6L to 25L
- Overheat protector, Cooling fan
- Moisture proof PCB
- Environmentally friendly
- High-performance transducers



### CH-120 Digital Rotational Viscometer

#### Salient Features

- Auto Range function.
- Selectable Speed.
- Direct Viscosity reading and temperature display.
- Big Ultra Bright Backlight LCD Display



### CH-121 Orbital Shaking Incubator Cum B.O.D. Incubator With Digital Controller With Digital Timer & Rpm

Capacity 16 x 500 ml. Flax temp.  $5^\circ\text{C}$  above ambient to  $60^\circ\text{C}$ . Same as but tem. range  $5^\circ\text{C}$  to  $60^\circ\text{C}$  with lighting arrangement to hold 16 flasks 250ml or 500 ml.



### CH-122 Flocculator/Jar Test Apparatus

Flocculator/Jar Test Apparatus is a flocculation (jar) tests on water and effluent samples. A digital display clearly indicates the speed of the rotational stainless steel paddles, which can be varied from 25 to 250rpm. The digital timer can be set to count down from 1 to 99 minutes. After count down, the paddles stop and an alert sounds. The timer then counts up in minutes in order to measure settling time. Two pre-set programs allow routine speed and time parameters to be input and then selected by simply pressing one button. Parameters are stored in the memory and can be recalled or altered at any time. The intuitive touch sensitive keypad is totally flat for easy cleaning. It is supplied with stainless steel paddles with adjustable spaces to adjust the depth of the paddles. RPM measurement arrangement is provided.

**CH-123 Spectrophotometer (Microprocessor Based)****TECHNICAL SPECIFICATION**

- Microprocessor Based
- 4 Digit Seven Segment Bright Red LED Display
- Easy to Use, Press one button for easyswitching of %T, Abs., Conc. modes
- Auto Zero and Blank
- Printer Attachment Facility
- PC Connectivity through USB
- Large Sample Compartment, can accommodate 5-100 mm path length cuvettes with optional holders.

**CH-124 Digital Photo Colorimeter**

- Using Latest Microcontroller
- 1ml sample volume
- Range from 400 to 700nm
- Auto Zero Facility
- Highly Stable & Accurate
- Battery/Mains operated Colorimeter also Available

**CH-125 Colony Counter**

- Readout 0 – 999999
- 7-Segment LED Display
- Auto Marker Pen
- Audible Confirmation of Each Count
- Uniform Glare Free Illumination
- Wolffhugel Glass Grid with Focusing Facility
- LED Based Illumination

**CH-126 pH Meter****TECHNICAL SPECIFICATION**

High precision pH meter with large backlit LCD display. The meter can displays many useful prompt messages to helps you quickly and easily measuring the samples.

Benchtop pH/mV/°C Meter

**Features:**

- During the pH mode, Up to 5 points push-button calibration with auto- buffer recognition.
- Selectable pH buffer standards and temperature units.
- Automatically calculates and displays electrode slope after calibration.
- Automatic Temp. Compensation (ATC) ensures highly accurate measurement over the entire range.

**CH-127 Digital Conductivity Meter****Features**

- Microcontroller Based
- Highly Stable & Accurate
- Auto Ranging Facility
- Cell Constant Measurement and Adjustment Facility
- 3½ Digit Display
- Automatic Temperature Compensation Facility



## SS-128 Sieve Shaker Gyratory

### Optional:

(I) 0-60 minutes timer.



Sieve Shaker Electrical



SS-129 Sieve Shaker Hand Operated



SS-130 Sieves Brass Frame



SS-131 Sieve GI Frame

## TEST SIEVES

TEST SIEVES 8" (20 cm.) dia., brass frame, without joint and with a S.S. cloth.

B.S.S. Mesh No.	ASTM No.	I.S.S. No.	Width of Aperture
4	5	480	4.75 mm.
5	6	340	3.35 mm.
6	7	280	2.80 mm.
7	8	240	2.36 mm.
8	10	200	2.00 mm.
10	12	170	1.70 mm.
12	14	140	1.40 mm.
14	16	120	1.18 mm.
16	18	100	1.00 mm.
18	20	85	850 microns
22	25	70	710 microns
25	30	60	600 microns
30	35	50	500 microns
36	40	40	425 microns
44	45	35	355 microns
50	50	30	300 microns
60	60	25	250 microns
70	70	20	212 microns
85	80	18	180 microns
100	100	15	150 microns
120	120	12	125 microns
150	140	10	106 microns
170	170	9	90 microns
200	200	8	75 microns
240	230	7	63 microns
300	270	6	53 microns
325	300	5	45 microns
350	325	4	44 microns
400	380	3	40 microns

**LID AND PAN SET** Made of brass for above.

**COARSE SIEVES** 12" (30cm/18" 45cm) dia., G.I. sheet frame, with steel sheet square punching.

125 mm.	106 mm.	100 mm.	90 mm.
75 mm.	63 mm.	53 mm.	50 mm.
40 mm.	37.5 mm.	31.5 mm.	26.5 mm.
22.4 mm.	20 mm.	16 mm.	13.2 mm.
11.2 mm.	10 mm.	8 mm.	6.7 mm.
5.6 mm.	4.75 mm.		

**LID AND PAN SET** Made of G.I. sheet for above 12"/18" dia.



**LABORATORY GLASSWARE BOROSILICATE GLASS****GL-132 Burettes, Single Bore Teflon Key  
(Rota Flow) CLASS 'B'**

Cap. ml.	Sub. Div. ml.	Tol $\pm$ ml.
1	0.01	0.01
2	0.02	0.02
5	0.05	0.02
10	0.05	0.05
25	0.10	0.10
25	0.05	0.06
50	0.10	0.1
100	0.20	0.2

**GL-133 Cylinders Graduated Single Metric Scale  
with Pour out Accuracy as per CLASS 'B' of I.S.  
878 : 1975 HEXAGONAL BASE**

Cap. ml.	Sub. Div. ml.	Tol $\pm$ ml.
5	0.1	0.1
10	0.2	0.2
25	0.5	0.5
50	1.0	1.0
100	1.0	1.0
250	2.0	2.0
500	5.0	5.0
1000	10.0	10.0
2000	20.0	20.0

**GL-134 Volumetric Flask I/C Penny Head  
Solid stopper Accuracy as per Class 'B'  
of I.S. 915 : 2006**

Cap. ml	Stopper Size	Tol $\pm$ ml
5	10/13	0.04
10	10/13	0.04
20	10/13	0.06
25	10/13	0.06
50	10/13	0.08
100	14/15	0.15
200	14/15	0.2
250	14/15	0.2
500	19/20	0.3
1000	19/20	0.8
2000	24/29	1.2

**GL-135 Beakers, Griffin Low Form AMBER  
COLOUR with Spout**

Cap. ml.
25
50
100
150
250
500
1000
2000

**GL-136 Conical Flasks Erlenmeyer, N. M.**

Cap. ml.
10
25
50
100
150
250
250 W.M.
500
1000
2000

**GL-137 Flasks, Round Bottom, Short/Medium  
Neck with I/C Joint**

Cap. ml.	Socket Size
100	14/23
100	19/26
100	24/29
150	19/26
150	24/29
250	14/23
250	19/26
250	24/29
250	29/32
250	34/35
500	14/23
500	19/26
500	24/29
500	29/32
1000	19/26
1000	24/29
1000	29/32
2000	24/29
2000	29/32
2000	34/35



**GL-138 Boiling Flasks, Round or Flat Bottom Plain Neck**

Cap. ml.
25
50
100
250
500
1000
2000
3000

**GL-139 Round Bottom Flasks, Two Necks, Centre Neck and One Angled or Parallel Side Neck**

Cap. ml.	Socket Size	Side Socket
100	24/29	14/23
100	24/29	19/26
250	24/29	14/23
250	24/29	19/26
500	24/29	14/23
500	24/29	19/26
1000	24/29	19/26
1000	34/35	24/29

**GL-140 Round Bottom Flasks, Three Necks, Centre Neck and Two Angled or Parallel Side Neck**


Cap. ml.	Socket Size	Side Socket
100	24/29	14/23
100	24/29	19/26
250	24/29	14/23
250	24/29	19/26
500	24/29	14/23
500	24/29	19/26
1000	24/29	19/26
1000	34/35	24/29

**GL-141 Gooch Crucible with Sintered Disc**

Cap. ml.	Disc. Dia mm.	Porosity Grade
15	20	1,2,3,4
30	30	1,2,3,4

**GL-142 Volumetric Pipettes, Transfer Accuracy as per CLASS 'B' of I. S. 1117 : 1975**

Cap. ml.	Tol ±ml
1	0.02
2	0.02
3	0.03
4	0.03
5	0.03
10	0.04
15	0.05
20	0.05
25	0.06
50	0.08

**GL-143 Pipettes, Measuring (MOHR TYPE) Accuracy as per CLASS 'B' of I.S. 4162 : 1985 (These Pipettes are graduated for deliver from zero mark to the graduated mark) Colour Coated**


Cap. ml.	Sub. Div. ml.	Tol ±ml
0.1	0.01	0.01
0.2	0.01	0.01
0.5	0.2	0.01
1.0	0.1	0.01
1.0	0.01	0.02
2.0	0.1	0.02
2.0	0.02	0.06
5.0	0.1	0.10
5.0	0.05	0.10
10.0	0.1	0.15
20.0	0.2	0.20
25.0	0.2	0.20

**GL-144 Funnels**

Dia mm
50
75
100

**GL-145 Separating Funnels, with PTFE PLUNGER Stop-cock and I/C Stopper**

Cap. ml.	Stopper Size
125	19/26
250	24/29
500	24/29

**GL-146 Regent Bottle  
Narrow/Wide Mouth**

Capacity ml
30
60
125
250
500
1000

**GL-147 Regent Bottle Wide  
Mouth Screw Cap**

Capacity ml
250
500
1000

**GL-148 Regent Bottle Narrow  
/Wide Mouth Amber Colour**

Capacity ml
30
60
125
250
500
1000

**GL-149 Winchester  
Bottles**

Capacity ml
2000
2500
3000
5000

**GL-150 Specimen  
Jar Screw with LID**

Capacity ml
250
500
1000

**GL-151 Specimen Jar  
Rectangular with LID**

Size cm	Size cm
15x10x5	26x17x9
20x10x5	30x17x9
20x12x10	20x20x12
26x15x10	25x25x12

**GL-152 Dessicator  
with LID Plain/Vacuum**

Size mm
100
125
150
200
250
300

**GL-153 VACUUM MANIFOLDS  
(Stainless Steel)**

- Manufactured from highest grade stainless steel to filtrate upto six samples at the same time.
- This system is manufactured to be used with 47/50 mm diameter membranes. Supplied as a single unit without accessories.
- Individual PTFE control valves allow filtration through different branches with a single vacuum pump.



Cat.	Manifold model
(a)	with 1 funnel holder
(b)	with 3 funnel holder

**GL-154 VACUUM FILTRATION UNIT**

Manufactured From Borosilicate glass 3.3 which is resistant to heat and almost all chemicals. Particularly suitable for analysis of microscopic residue particle control, filtration of alkaline and aggressive solutions as well as buffer solutions for HPLC. Borosilicate 3.3 glass sintered disc is used to support membranes. Suitable to be used with 47-50 mm diameter membranes. Autoclavable at 1210C and 1.1 bar for 30 minutes.



Cat.	Membrane Dia. mm	Funnel Cap. ml.	Flask Cap. ml.
(a)	25	25	250
(b)	25	50	500
(c)	47	300	1000
(d)	47	300	2000

**GL-155 IODINE FLASKS**

These flasks are blown specially for iodine value determination. With flaring, funnel shaped cup.

Capacity (ml)	Interchangeable Joint
100	24/29
250	24/29
500	24/29
1000	24/29

**GL-156 DISTILLATION FLASKS**

These Quality Flasks are recommended for all types of distillation work, particularly for hazardous distillation involving flammable material. The side arm is placed approximately 3" below the top of neck at angle of 75°.

Capacity (ml)	O.D.xHeight mm(Approx.)
100	60X200
250	85X200
500	105X240
1000	125X300

**GL-157 Petri Dishes Plain**

O.D. mm	Height mm
50	17
80	17
100	17
150	20
200	

**GL-159 Centrifuge Tube, Graduated with Rim Conical Bottom**

Size ml	OD mm.	Height mm.
10	16	110
15	17	120

**GL-160 Test Tube with Rim/without Rim**

O.D. (mm.)	Length (mm.)	Cap. ml.
12	75	5
12	100	5
15	125	10
15	150	15
18	150	20
25	150	30
25	200	50

**GL-162 Tubes-Culture, Media, Flat Bottom, with Screw Cap and Rubber Liner**

Capacity ml.	O.D. X Height mm.
5	16 x 50
15	25 x 57
30	25 x 95

**GL-164 Glass Rod (For Stirring) Both end Fire Polish**

O.D. x Height mm
8 x 200

**GL-165 Blood Sugar Tubes, as Per I.S. 3740 : 1966**

Cap. ml.	Dia mm	Height mm.	Graduated at ml.
25	20	215	4.00, 12.5 & 25

**GL-166 Watch Glass**

Dia 50, 75, 100 mm

**GL-158 Condensers, Leibig with I/C Joint**

Joint Size	Length mm
19/26	200
19/26	300
19/26	350
19/26	400
24/29	200
24/29	300
24/29	350
24/29	400
24/29	450
24/29	500

**GL-161 Specific Gravity Bottle with Capillary Bore I/C Stopper**

Cap. ml.	Joint Size
5	10/19
10	10/19
25	10/19
50	10/19

**GL-163 Condensers, Leibig Sealed Inner Tube**

Length mm.
100
200
300
350
400

- Ostwald Viscometer U-Type
- Stalgonometer
- Pyknometer
- Theiles Tube 150x25mm
- U-Tube 15x125 mm
- Sloping Bend with B-24 Joint
- Recovery Adapter
- Steam Distillation Apparatus with 1000ml flask, splash head, liebig Condenser & Recovery Adapter
- Steam Distillation Apparatus with 250/500/1000ml flask, Slope Bend, liebig Condenser & Recovery Adapter
- Fusion Tube/Ignition Tube
- Capillary Tube for Melting Point

**BT-167 TLC Kit**

- a) Applicator made of electroplated brass/aluminium
- b) Plate Rack or aluminum Rack This rack holds ten 20 x 20 cm plates which can be stacked horizontally
- c) Perspex base
- d) Spotting template made of Perspex
- e) Glass Plate for T.L.C. (Glass plate with polished edges, about 4mm thick)
- f) Reagent Sparayer (all glasses)  
(This all glass reagent sprayer is a low cost yet efficient alternative to the TLC sprayer. It comes with a rubber pump but may also be operated from a compressed air or Nitrogen Supply.)
- g) Developing tank with lid (Borosilicate Glass)
- h) Scriber for marking lines, complete along with instruction manual.
- i Micro Pipette

**BT-168 Ultra Violet Inspection Cabinet (U.V. Cabinet)**

For visualization of test objects under UV tubes having long wavelength (365nm) and short wavelength (254nm) as desired. A fluorescent tube is fitted to the unit for day light visualization.

To work on 220/230Volts AC supply.

**BT-169 Paper Strip Horizontal**

Paper Strip Electrophoresis Apparatus Horizontal Model can accommodate 6 interlock switch breaks the current of both electrodes while the lid of mechanism is uplifted. Both electrode sections have capacity of 550ml and each are provided with transvers baffles to minimize. Diffusion of buffer which is in contact with ends of paper strip. Polarity of the electrode is indicated by two pilot lamps provided on the front panel. The complete mechanism is fitted with leveling screws. The elementary unit consists of anode & cathode reservoir with platinum electrodes, special glass lid (1No.) & Power Cord.

**BT-170 Submarine Electrophoresis**

This mechanism answers the demand for small. This economy model minimized the cost of buffer. This elementary unit with fixed platinum electrode assembly consists of perforated lid for vapors, gel trays 5x7cm. (2 nos.) 10x7cm. (1 nos.), 8 well comb 1.5mm (2 nos.), 3 well comb 3.0mm, (1 no.) comb stand connecting cord & instruction manual.

**BT-171 Vari Pack**

Vari Pack is very simple to operate. It is very ideal for student practical classes & routine clinical work. It is designed to give 50, 100, 200 or 250 volts constantly indicated by LED on each point. Its maximum current is up to 100 mA.





### CH-172 Retort Stand

Made of mild sheet powder coated with chrome plated rod.

Available Sizes:

- A 8" x 5" x 24"      B 7 x 5 x 24 x 3/8  
C 9" x 6" x 30"

### CH-173 Retort Stand

The non-corrosive, molded retort stand provide excellent replacement for the metal ones. Even the metallic rod has a polypropylene covering making it non corrosive screwed into the heavy base giving way to a perfectly stable retort stand.

Available Sizes:

- A 9" x 6" x 30"

### CH-174 Burette Clamp

Fisher Type die pressed sheet made of mild steel

Powder coated, to hold one burette.

\*Also available in Chrome plated.

### CH-175 Three Finger Clamp

Made of al-alloy die casting Capacity hold upto 90mm dia provided M.S. with 7" rod. Chrome plated articles jaws are rubber covered finish powder coated.

### CH-176 Four Finger Clamp : (Cross Pattern)

Made of Al-alloy die casting, cork lined finish powder coated. Hold upto 90mm with M.S. 7" Rod chrome plated

\* Also available in Chrome plated.

### CH-177 Universal Clamp

Made of al-alloy die casting, cork lined, Finish powder coated. Hold upto 75 mm dia with M.S. 7" Rod chrome Plated.

### CH-178 Bunsen Burner

Cast iron base, Riffled Nozzle, Air Regulator Chrome plat finish.

Use with LPG Gas, Use with Natural Gas

### CH-179 Bunsen Burner

Heavy cast iron powder coated base with stop cock, Double Walled Brass Pipe with spare jet.





### CH-180 Tripod Stand

Cast iron, black powder coated Round top, Zinc plated legs Plastic rubber feet.

**Sizes Available: (in inches)**

A 6x4 D 6x5 G 8x6

B 7x4 E 7x5

C 8x4 F 8x5



### CH-181 Spirit Lamp

Spirit lamp stainless steel capacity 100 mm



### CH-182 Crucible Tong

Made of Stainless Steel

Sizes: A 6" B 8" C 10" D 12" E 18" F 24"



### CH-183 Cork Borers

all types chrome plated.



### CH-184 Hoffman's Screw Clip

brass chrome plated.

**Set of**

12 Heavy Pattern

18 Heavy Pattern

25 Heavy Pattern



### CH-185 Test Tube Holder

chrome plated.



### CH-186 SSI-227 Gas Tap

Gas Tap one/two/four way made of brass chrome plated/powder coated.



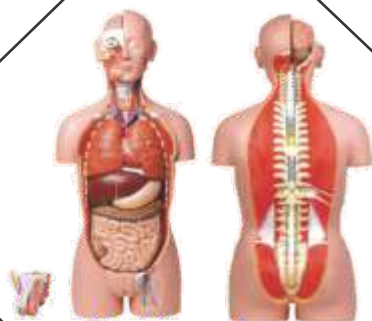
### CH-187 Water Tap

Water Tap swan neck made of brass chrome plated one/two/three way.

## ULTIMATE IN SCIENTIFIC INSTRUMENTS

A complete house for

- Scientific Laboratory Equipments
- Engineering, Medical, Surgical Instruments
- Lab, Glassware, Chemicals, Polytheneware
- Teaching & Audio Visual Aids





# SINGHLA SCIENTIFIC INDUSTRIES

5309/27, Punjabi Mohalla,  
Ambala Cantt - 133001

Tel : 0171-2642878, 2642209, 4008453 (O)

: 0171-2643414, 4068453

[singhla@rediffmail.com](mailto:singhla@rediffmail.com)

[www.polylabindia.com](http://www.polylabindia.com)

[www.singhlascientific.com](http://www.singhlascientific.com)